

Memo

From: Joan Wall, Clerk-Treasurer

To: Freeport City Council

Date: 6/20/19

Re: Stearns County Comprehensive Plan Update

Please let me know if you have any feedback that should be put on the questionnaire and returned to Stearns County. The EDA looked at this during their June 19 meeting and suggested expanding the Urban Expansion area around Freeport as noted by the dark pink lines to the south and the northwest.





June 7, 2019

Stearns County Comprehensive Plan Update

Dear Cities and Townships,

Stearns County is embarking on an update to their Comprehensive Plan. The Comprehensive Plan sets a path for achieving the County's vision for the future (the year 2040). This document is used by county staff and county leaders as they make future decisions regarding land use regulations and development, natural resources, parks and trails, and other community resources. The last plan was adopted in 2008. The Comprehensive Plan is typically updated every ten-years to reaffirm the County's goals and policies, while evaluating community needs and growth projections.

As part of this effort, **we need your help in reaffirming the Urban Expansion areas that were identified in the Future Land Use Plan** (see attached map). The Urban Expansion areas represent areas that are anticipated to develop over time or have been recognized in a city's comprehensive plan. The Stearns County's Comprehensive Plan protects these areas from premature subdivisions until they can be developed at higher densities or served by municipal services.

Stearns County does not anticipate making any revisions to the Urban Growth areas unless there is a desire by a City or Township to revisit these areas. In that respect, **we are hoping you can answer a few question on the back of this page by July 19, 2019**. We are also seeking any input on revisions to the Future Land Use Plan map. This map has been attached to this letter for your reference. We also encourage you to review the 2008 Comprehensive Plan's Land Use Chapter prior to filling out the questioner. This document can be accessed by visiting the project website at shapestearns.com.

If you have any questions, please feel free to contact me at (320) 656-3613 or via email at angie.berg@co.stearns.mn.us. More information about the update is available through the project website. We look forward to working with you on this update.

Sincerely,

Angie Berg
Land Use Division Supervisor
Stearns County



City and Township Questionnaire (June 2019)

1. Township or City Name: _____

2. Contact Information

Name: _____

Address: _____

Email: _____

Phone Number: _____

3. Would you like the County to revisit the Urban Growth areas identified in the attached map (please circle your response)? Yes No

4. Please provide a description and reason for this request. For example, how do you anticipate this area changing over the next twenty-years from a development perspective?

5. Do you have any other land use revisions you want to see made to the Future Land Use Plan map?

6. Do you have any other question or concerns about the County's Comprehensive Plan Update?

Millwood Township

August 2008

Future Land Use Plan

Stearns County Comprehensive Plan Update

Figure 3.4

Amended By Ordinance #411, August 19, 2008

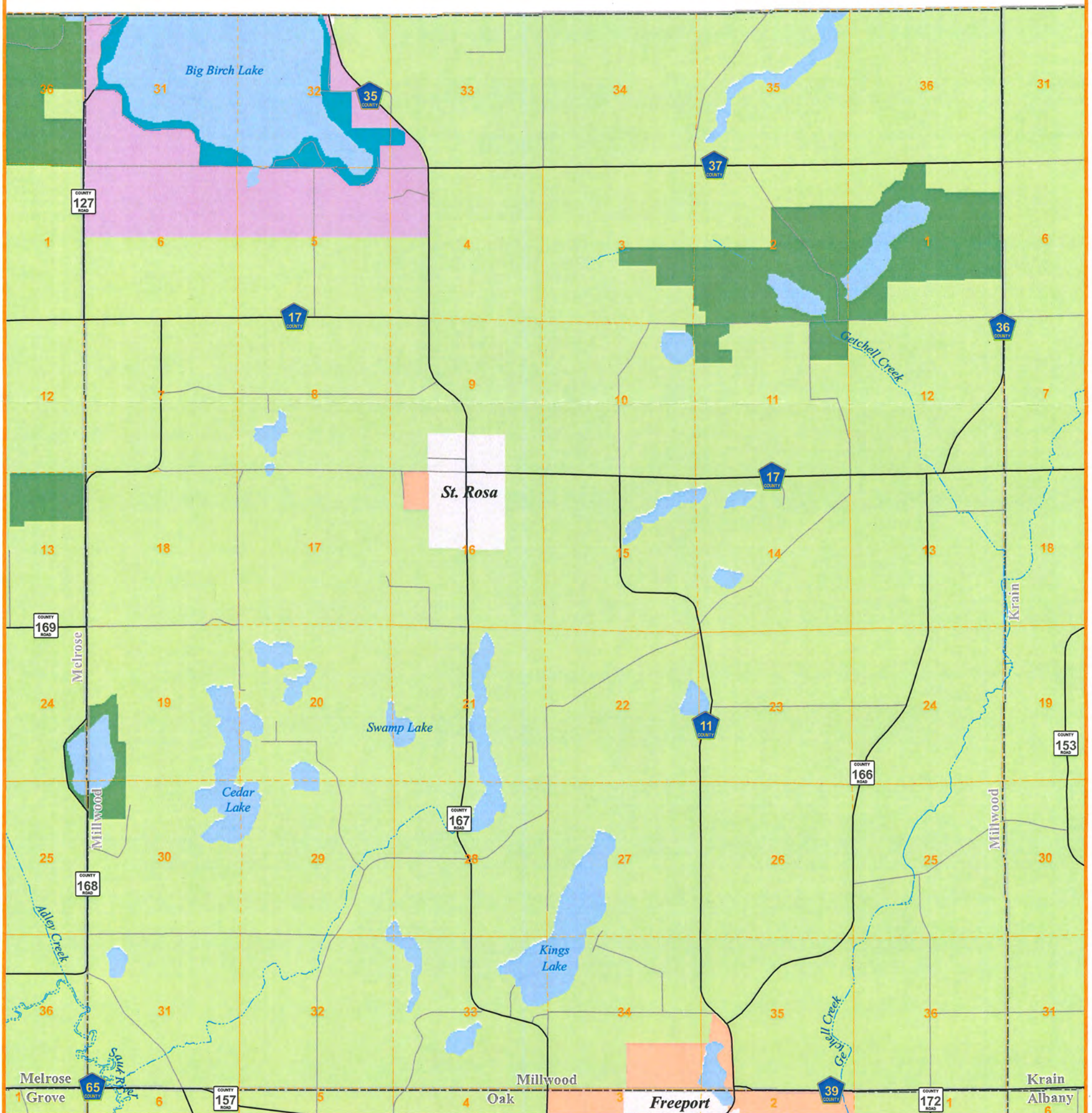
Legend

Future Land Use

- Agricultural
- Limited Residential
- Moderate Residential
- Urban Expansion
- Townsite Mixed Use
- Avon Hills Conservation Area
- Shoreland / Concentrated Residential
- Commercial
- Industrial
- Public / Semi-Public
- Orderly Annexation Areas



0 0.5 1
Miles



Oak Township

Future Land Use Plan

August 2008

Stearns County Comprehensive Plan Update

Figure 3.4

Amended By Ordinance #411, August 19, 2008

Legend

Future Land Use

- Agricultural
- Limited Residential
- Moderate Residential
- Urban Expansion
- Townsite Mixed Use
- Avon Hills Conservation Area
- Shoreland / Concentrated Residential
- Commercial
- Industrial
- Public / Semi-Public
- Orderly Annexation Areas

